

CHECK VALVE zCHE



Body material	Nominal pressure	Nominal diameter	Max. temperature
A Grey cast iron	C 16 bar	DN 15-300	300°C
C Nodular cast iron	C 16 bar D 25 bar	DN 15-200 DN 15-80	350°C
E Bronze	C 16 bar B 10 bar A 6 bar	DN 15-125 DN 150-200 DN 250-300	225°C



correspond to the pressure equipment directive 2014/68/UE marking CE for DN≥32

FEATURES

- closing tightness acc. to EN -12334
- compact settlement
- environment-friendly
- no maintenance
- face-to-face dimension according to EN 558 series 8
- flanges drilled according to EN 1092-2

APPLICATION *

*not all of the applications are suitable for all of the executions

industries						
	INDUSTRY	SHIPBUILDING INDUSTRY	HEATING	REFRIGERATION AND AIR CONDITIONING		
media						
	GLYCOL	INDUSTRIAL WATER	DIATHERMIC OIL	STEAM	COMPRESSED AIR	NEUTRAL FLUIDS

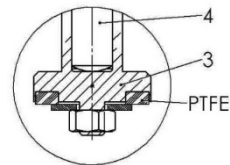
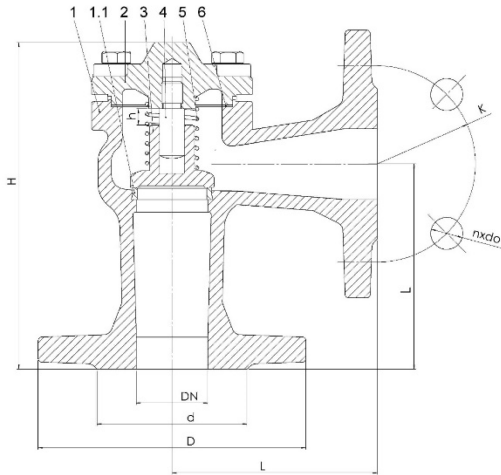
Data given can be changed without notice.

Edition 01/2018

FIG.288

MATERIALS, DIMENSIONS

Type 38*



* (max. temperature 200°C – on request)

	Body material	A	C	A	C	E
	Type	31; 41		33; 43		32
1	Body	EN – GJL-250 5.1301 (ex. JL1040)	EN – GJS-400-18 5.1303 (ex. JS1025)	EN – GJL-250 5.1301 (ex. JL1040)	EN – GJS-400-18 5.1303 (ex. JS1025)	CuSn5Zn5Pb5-C
1.1	Seat ring	X12Cr13 1.4006		CuSn10		CuSn5Zn5Pb5-C
2	Cover	EN – GJL-250 5.1301 (ex. JL1040)	EN – GJS-400-18 5.1303 (ex. JS1025)	EN – GJL-250 5.1301 (ex. JL1040)	EN – GJS-400-18 5.1303 (ex. JS1025)	CuSn5Zn5Pb5-C
3	Disc	X12Cr13 1.4021		CuSn10		DN15-32 CuZn35Ni DN40-300 CuSn5Zn5Pb5-C
4	Stem	X12Cr13 1.4021		CuSn10		DN15-32 CuZn35Ni DN40-300 CuSn5Zn5Pb5-C
5	Spring	X17CrNi16-2 1.4057		CuSn6		-
6	Gasket	Graphite CrNi				FA1
Max. temperature		300°C	350°C	225°C		

DN	15	20	25	32	40	50	65	80	100	125	150	200	250	300	
L	90	95	100	105	115	125	145	155	175	200	225	275	325	375	
PN16	D	95	105	115	140	150	165	185	200	220	250	285	340	460	
	d	46	56	65	76	84	99	118	132	156	184	211	266	370	
	K	65	75	85	100	110	125	145	160	180	210	240	295	355	410
	nxdo	4x14	4x14	4x14	4x19	4x19	4x19	4x19	8x19	8x19	8x19	8x23	12x23	12x28	12x28
PN25	D	95	105	115	140	150	165	185	200	-	-	-	-	-	
	d	46	56	65	76	84	99	118	132	-	-	-	-	-	
	K	65	75	85	100	110	125	145	160	-	-	-	-	-	
	nxdo	4x14	4x14	4x14	4x19	4x19	4x19	8x19	8x19	-	-	-	-	-	
h	5	5	8	8	11	14	17	21	25	32	38	50	65	95	
H	140	142	157	165	185	198	224	237	292	329	363	452	535	635	
K _{vs} (m ³ /h)	5,9	10,7	15,1	22,3	28	52	91,3	133	214	330	483	865	1295	2013	
Weight (kg) A,C	2,6	2,7	3,8	5,5	7,4	9,5	12,8	20	29	41	66	111	196	302	
Weight (kg) E	2,3	3,5	4,0	5,0	7,5	10	14	17	20	30	40	80	130	180	

Data given can be changed without notice.

Edition 01/2018

ZETKAMA Sp. z o.o.
Ul. 3 Maja 12
PL 57-410 Ścinawka Średnia

Tel. +48 74 8652 193
Tel. +48 74 8652 111
Fax +48 74 8652 199

E-mail export@zetskama.com.pl
www.zetskama.com

PRESSURE-TEMPERATURE RATINGS

Acc. EN 1092-2	PN		-60÷ -10°C	-10 ÷120°C	150°C	200°C	250°C	300°C	350°C	400°C	450°C
EN – GJL-250	16	bar	-	16	14,4	12,8	11,2	9,6	-	-	-
EN – GJS-400 – 18-LT	16		-	16	15,5	14,7	13,9	12,8	11,2	-	-
EN – GJS-400 – 18-LT	25		-	25	24,3	23	21,8	20	17,5	-	-

TYPE

Figure	Body material	Nominal diameter	Nominal pressure	Type
288	A Grey cast iron EN-GJL-250	15-300 mm	C 16 bar	31 loose disc with spring; stem, disc and seat ring - stainless steel
		15-150 mm	C 16 bar	38 loose disc with spring; stem, disc and seat ring - stainless steel; disc gasket PTFE (120°C)
		15-300 mm	C 16 bar	41 loose disc without spring; stem, disc and seat ring - stainless steel
		15-300 mm	C 16 bar	33 loose disc with spring; stem, disc and seat ring - bronze
		15-300 mm	C 16 bar	43 loose disc without spring; stem, disc and seat ring - bronze
288	C Nodular cast iron EN-GJS-400-18-LT	15-200 mm	C 16 bar	31 loose disc with spring; stem, disc and seat ring - stainless steel
		15-150 mm	C 16 bar	38 loose disc with spring; stem, disc and seat ring - stainless steel; disc gasket PTFE (120°C)
		15-200 mm	C 16 bar	41 loose disc without spring; stem, disc and seat ring - stainless steel
		15-200 mm	C 16 bar	33 loose disc with spring; stem, disc and seat ring - bronze
		15-200 mm	C 16 bar	43 loose disc without spring; stem, disc and seat ring - bronze
		15-80 mm	D 25 bar	31 loose disc with spring; stem, disc and seat ring - stainless steel
		15-80 mm	D 25 bar	38 loose disc with spring; stem, disc and seat ring - stainless steel; disc gasket PTFE (120°C)
		15-80 mm	D 25 bar	41 loose disc without spring; stem, disc and seat ring - stainless steel
		15-80 mm	D 25 bar	33 loose disc with spring; stem, disc and seat ring - bronze
		15-80 mm	D 25 bar	43 loose disc without spring; stem, disc and seat ring - bronze
288	E Bronze CuZn5Zn5Pb5-C	15-125 mm	C 16 bar	32 loose disc with spring; stem-brass, disc and seat ring - bronze

Data given can be changed without notice.

Edition 01/2018

FIG.288

150-200 mm	B 10 bar	32 loose disc with spring; stem- brass, disc and seat ring - bronze
250-300 mm	A 6 bar	32 loose disc with spring; stem- brass, disc and seat ring - bronze

ORDERING

Figure	Body material	Nominal diameter	Nominal pressure	Type
288	A Grey cast iron EN-GJL-250	15-300 mm	C 16 bar	31 loose disc with spring; stem, disc and seat ring - stainless steel

Order example acc. index

288 A 050 C 31

Check valves, ends threaded, form angle
 Grey cast iron EN-GJL-250
 Nominal diameter (mm)
 Nominal pressure PN 16
 Loose disc with spring; stem, disc and seat ring - stainless steel

288 A 050 C 31

Data given can be changed without notice.

Edition 01/2018