

Diaphragm Valve, Metal

Construction

The GEMÜ 611 and 671 manually operated 2/2-way metal diaphragm valves have a low maintenance plastic bonnet and an integral optical position indicator as standard.

Features

- Suitable for inert and corrosive* liquid and gaseous media
- Chemical resistance of bonnet
- Insensitive to particulate media
- Valve body and diaphragm available in various materials and designs
- Compact design (ideal when space is at a premium)

Advantages

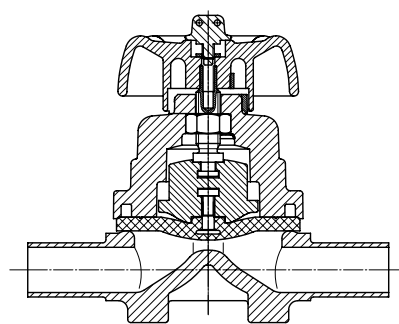
- Hermetic separation between medium and bonnet
- Optional flow direction
- Installation for an optimized draining is possible
- Optional accessories for 671:
 - Electrical remote indication that the valve is in the open position
 - Lockable handwheel clamp

*see information on working medium on page 2

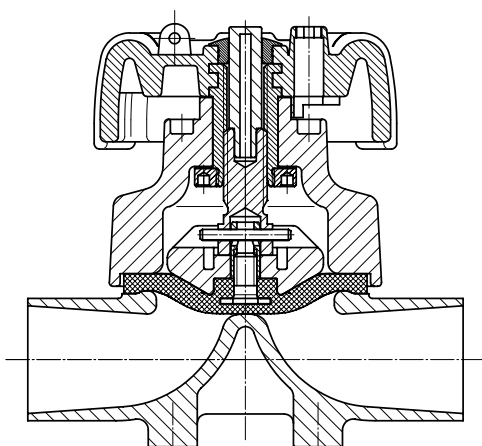


GEMÜ 611

Sectional drawing



GEMÜ 611



GEMÜ 671



GEMÜ 671

Technical data

Working medium

Corrosive, inert, gaseous and liquid media which have no negative impact on the physical and chemical properties of the body and diaphragm material.

Temperatures

Media temperature -10 ... 80 °C

Ambient temperature 0 ... 60 °C

Type	Diaphragm size	Operating pressure [bar]	
		EPDM	PTFE
GEMÜ 611	10	0 - 10	0 - 6
GEMÜ 671	25 - 100	0 - 10	0 - 6

All pressures are gauge pressures. Operating pressure values were determined with static operating pressure applied on one side of a closed valve. Sealing at the valve seat and atmospheric sealing is ensured for the given values. Information on operating pressures applied on both sides and for high purity media on request.

Kv values [m³/h]

Type	Pipe standard		DIN	EN 10357 series B (formerly DIN 11850 series 1)	EN 10357 series A (formerly DIN 11850 series 2) / DIN 11866 series A	DIN 11850 Series 3	SMS 3008	ASME BPE / DIN 11866 series C	ISO 1127 / EN 10357 series C / DIN 11866 series B
	MG	DN	0	16	17	18	37	59	60
GEMÜ 611	10	10	-	2.4	2.4	2.4	-	2.2	3.3
		15	3.3	3.8	3.8	3.8	-	2.2	4.0
		20	-	-	-	-	-	3.8	-
GEMÜ 671	25	15	4.1	4.7	4.7	4.7	-	-	7.4
		20	6.3	7.0	7.0	7.0	-	4.4	13.2
		25	13.9	15.0	15.0	15.0	12.6	12.2	16.2
	40	32	25.3	27.0	27.0	27.0	26.2	-	30.0
		40	29.3	30.9	30.9	30.9	30.2	29.5	32.8
	50	50	46.5	48.4	48.4	48.4	51.7	50.6	55.2
		65	-	-	-	-	62.2	61.8	-
	80	65	-	-	77.0	-	68.5	68.5	96.0
		80	-	-	111.0	-	80.0	87.0	111.0
	100	100	-	-	194.0	-	173.0	188.0	214.0

MG = diaphragm size

Kv values determined acc. to DIN EN 60534, inlet pressure 5 bar, Δp 1 bar, stainless steel valve body (forged body) and soft elastomer diaphragm. The Kv values for other product configurations (e.g. other diaphragm or body materials) may differ. In general, all diaphragms are subject to the influences of pressure, temperature, the process and their tightening torques. Therefore the Kv values may exceed the tolerance limits of the standard.

Order data

Valve type	Code
GEMÜ 611 diaphragm size 10	611
GEMÜ 671 diaphragm size 25 - 100	671

Body configuration	Code
2/2-way body	D

Connection	Code
Butt weld spigots	
Spigots DIN	0
Spigots EN 10357 series B (formerly DIN 11850 series 1)	16
Spigot EN 10357 series A (formerly DIN 11850 series 2) / DIN 11866 series A	17
Spigots DIN 11850 series 3	18
Spigots JIS-G 3447	35
Spigots JIS-G 3459	36
Spigots SMS 3008	37
Spigots BS 4825 Part 1	55
Spigot ASME BPE / DIN 11866 series C	59
Spigot ISO 1127 / EN 10357 series C / DIN 11866 series B	60
Spigots ANSI/ASME B36.19M Schedule 10s	63
Spigots ANSI/ASME B36.19M Schedule 40s	65

Threaded connections	
Threaded sockets DIN ISO 228	1
Threaded sockets NPT	31
Threaded spigots DIN 11851	6
One side threaded spigot, other side cone spigot and union nut, DIN 11851	62
Aseptic unions on request	

Flanges (GEMÜ 671)	
Flanges EN 1092 / PN16 / form B, length EN 558, series 1, ISO 5752, basic series 1	8
Flanges ANSI Class 150 RF, length MSS SP-88	38
Flanges ANSI Class 125/150 RF, length EN 558, series 1, ISO 5752, basic series 1	39

Clamp connections	
Clamps ASME BPE for pipe ASME BPE, length ASME BPE	80
Clamp DIN 32676 series B for pipe EN ISO 1127, length EN 558, series 7	82
Clamps ASME BPE for pipe ASME BPE, length EN 558, series 7	88
Clamps DIN 32676 series A for pipe DIN 11850, length EN 558, series 7	8A
Clamps SMS 3017 for pipe SMS 3008, length EN 558, series 7	8E

Overview of available valve bodies see page 12, 13

Valve body material	Code
EN-GJL-250 (GG 25)	8
CW617N (brass)	12
EN-GJS-400-18-LT (SG iron 40.3) PFA lined	17
EN-GJS-400-18-LT (SG iron 40.3) PP lined	18
1.4435, investment casting	C3
1.4408, investment casting	37
1.4408, PFA lined	39
1.4435 (316L), forged body	40
1.4435 (BN2), forged body Δ Fe<0,5%	42
1.4539, forged body	F4

Diaphragm material	Code
FPM	4
EPDM	13
EPDM	14
EPDM	17
EPDM	36
PTFE/EPDM convex, PTFE loose MG 25 - MG 100	5E*
PTFE/EPDM, PTFE lamin. MG 10	52
Material complies with FDA requirements, except code 4 and 14	
*For use with valve bodies see page 12, 13	

Control function	Code
Manually operated GEMÜ 611, 671	0
Manually operated (lockable handwheel) only GEMÜ 671	L

Bonnet version	Code
Bonnet size 2 for diaphragm size 25	2
Bonnet size 3 for diaphragm size 40	3
Bonnet size 4 for diaphragm size 50	4
Bonnet size 2Z for diaphragm size 25 Mounting for electrical position indicator GEMÜ 1215	2Z
Bonnet size 3Z for diaphragm size 40 Mounting for electrical position indicator GEMÜ 1215	3Z
Bonnet size 4Z for diaphragm size 50 Mounting for electrical position indicator GEMÜ 1215	4Z
Bonnet size 5Z for diaphragm size 80 Mounting for electrical position indicator GEMÜ 1215	5Z
Bonnet size 6Z for diaphragm size 100 Mounting for electrical position indicator GEMÜ 1215	6Z

Order data

Internal surface finishes for forged and block material bodies ¹

Readings for Process Contact Surfaces	Mechanically polished ²		Electropolished	
	Hygienic class DIN 11866	Code	Hygienic class DIN 11866	Code
Ra ≤ 0.80 µm	H3	1502	HE3	1503
Ra ≤ 0.60 µm	-	1507	-	1508
Ra ≤ 0.40 µm	H4	1536	HE4	1537
Ra ≤ 0.25 µm ³	H5	1527	HE5	1516

Readings for Process Contact Surfaces acc. to ASME BPE 2016 ⁴	Mechanically polished ²		Electropolished	
	ASME BPE Surface Designation	Code	ASME BPE Surface Designation	Code
Ra Max. = 0.76 µm (30 µinch)	SF3	SF3	-	-
Ra Max. = 0.64 µm (25 µinch)	SF2	SF2	SF6	SF6
Ra Max. = 0.51 µm (20 µinch)	SF1	SF1	SF5	SF5
Ra Max. = 0.38 µm (15 µinch)	-	-	SF4	SF4

Internal surface finishes for investment cast bodies

Readings for Process Contact Surfaces	Mechanically polished ²	
	Hygienic class DIN 11866	Code
Ra ≤ 6.30 µm	-	1500
Ra ≤ 0.80 µm	H3	1502
Ra ≤ 0.60 µm ⁵	-	1507

¹ Surface finishes of customized valve bodies may be limited in special cases.

² Or any other finishing method that meets the Ra value (acc. to ASME BPE).

³ The smallest possible Ra finish for pipe connections with an internal pipe diameter < 6 mm is 0.38 µm.

⁴ When using these surfaces, the bodies are marked according to the specifications of ASME BPE.

The surfaces are only available for valve bodies which are made of materials (e.g. GEMÜ material codes 40, 41, F4, 44) and use connections (e.g. GEMÜ connection codes 59, 80, 88) according to ASME BPE.

⁵ Not possible for GEMÜ connection code 59, DN 8 and GEMÜ connection code 0, DN 4.

Ra acc. to DIN EN ISO 4288 and ASME B46.1

Order example	671	25	D	60	C3	17	0	2	1500
Type	671								
Nominal size		25							
Body configuration (code)			D						
Connection (code)				60					
Valve body material (code)					C3				
Diaphragm material (code)						17			
Control function (code)							0		
Bonnet version (code)								2	
Surface finish (code)									1500

Dimensions [mm]

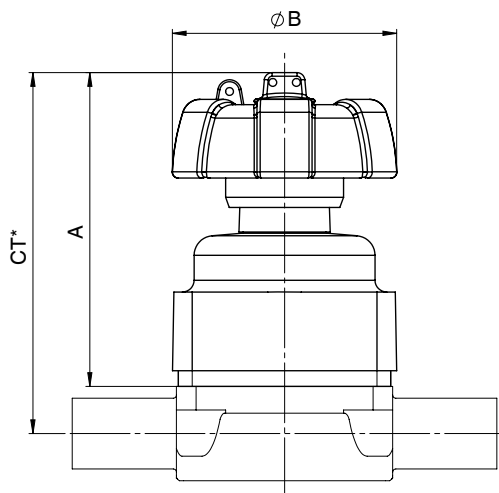
Bonnet dimensions

Type	MG	DN	Ø B	A	X*	A2	M	Weight [kg]
GEMÜ 611	10	10 - 20	60	80	-	-	-	0.15
GEMÜ 671	25	15 - 25	90	79	14	20	M16x1	0.4
	40	32 - 40	114	99	14	24	M16x1	0.6
	50	50 - 65	140	119	8	28	M16x1	1.0
	80	65 - 80	214	167	17	42	M16x1	3.8
	100	100	214	216	25	58	M16x1	5.1

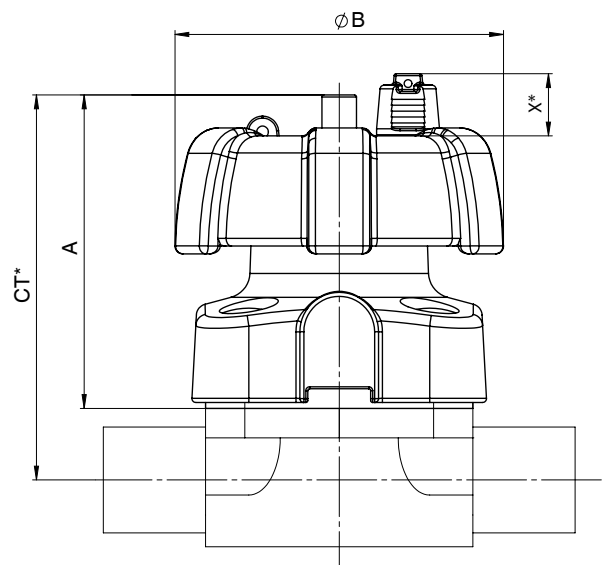
* only with control function code L

MG = diaphragm size

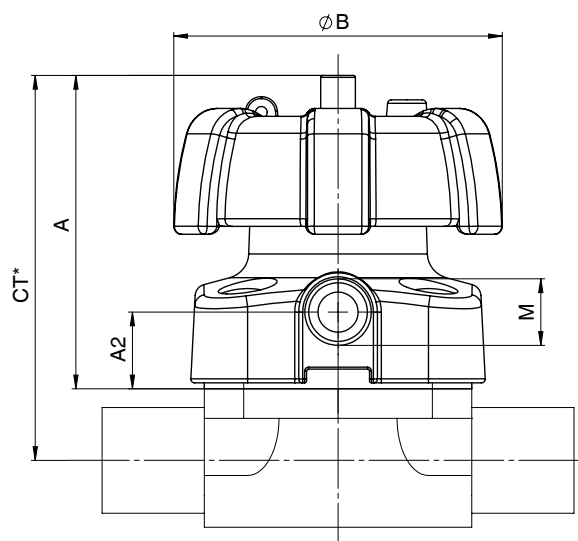
GEMÜ 611



GEMÜ 671



GEMÜ 671 Special version - Accessory Code Z



* $CT = A + H1$ (see body dimensions)

Body dimensions [mm]

Butt weld spigots, connection code 0, 16, 17, 18
Valve body material: Investment casting (code C3), forged body (code 40, F4)

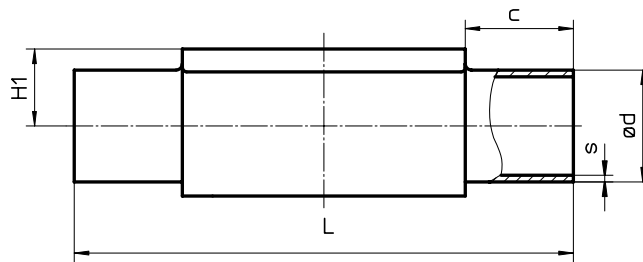
Pipe standard								DIN		EN 10357 series B (formerly DIN 11850 series 1)		EN 10357 series A (formerly DIN 11850 series 2) / DIN 11866 series A		DIN 11850 Series 3		Weight [kg]	
Connection code								0		16		17		18			
Type	MG	DN	NPS	L	c	H1*	H1**	ød	s	ød	s	ød	s	ød	s		
GEMÜ 611	10	10	3/8"	108	25	12.5		-	-	12	1.0	13	1.5	14	2.0	0.30	
		15	1/2"	108	25	12.5		18	1.5	18	1.0	19	1.5	20	2.0	0.30	
GEMÜ 671	25	15	1/2"	120	25	13.0	19.0	18	1.5	18	1.0	19	1.5	20	2.0	0.62	
		20	3/4"	120	25	16.0	19.0	22	1.5	22	1.0	23	1.5	24	2.0	0.58	
		25	1"	120	25	19.0	19.0	28	1.5	28	1.0	29	1.5	30	2.0	0.55	
	40	32	1 1/4"	153	25	24.0	26.0	34	1.5	34	1.0	35	1.5	36	2.0	1.45	
		40	1 1/2"	153	25	26.0	26.0	40	1.5	40	1.0	41	1.5	42	2.0	1.32	
	50	50	2"	173	30	32.0	32.0	52	1.5	52	1.0	53	1.5	54	2.0	2.25	
	80	65	2 1/2"	216	30	-	62.0	-	-	-	-	-	70	2.0	-	-	8.60
		80	3"	254	30	-	62.0	-	-	-	-	-	85	2.0	-	-	8.00
100	100	4"	305	30	-	76.0	-	-	-	-	-	104	2.0	-	-	24.10	

* only for investment cast design ** only for forged design MG = diaphragm size
 For materials see overview on page 12

Butt weld spigots, connection code 60
Valve body material: Investment casting (code C3), forged body (code 40, F4)

Pipe standard								ISO 1127 / EN 10357 series C / DIN 11866 series B		Weight [kg]
Connection code								60		
Type	MG	DN	NPS	L	c	H1*	H1**	ød	s	
GEMÜ 611	10	10	3/8"	108	25	12.5	12.5	17.2	1.6	0.30
		15	1/2"	108	25	12.5	12.5	21.3	1.6	0.30
GEMÜ 671	25	15	1/2"	120	25	13.0	19.0	21.3	1.6	0.62
		20	3/4"	120	25	16.0	19.0	26.9	1.6	0.58
		25	1"	120	25	19.0	19.0	33.7	2.0	0.55
	40	32	1 1/4"	153	25	24.0	26.0	42.4	2.0	1.45
		40	1 1/2"	153	25	26.0	26.0	48.3	2.0	1.32
	50	50	2"	173	30	32.0	32.0	60.3	2.0	2.25
	80	65	2 1/2"	216	30	-	62.0	76.1	2.0	8.60
		80	3"	254	30	-	62.0	88.9	2.3	8.00
100	100	4"	305	30	-	76.0	114.3	2.3	24.10	

* only for investment cast design ** only for forged design MG = diaphragm size
 For materials see overview on page 12



Body dimensions [mm]

Butt weld spigots, connection code 35, 36, 37
Valve body material: Investment casting (code C3), forged body (code 40, F4)

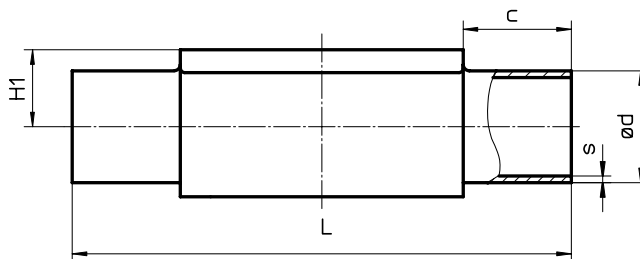
Pipe standard								JIS-G 3447		JIS-G 3459		SMS 3008		Weight [kg]
Connection code								35		36		37		
Type	MG	DN	NPS	L	c	H1*	H1**	ød	s	ød	s	ød	s	
GEMÜ 611	10	10	3/8"	108	25	-	12.5	-	-	17.3	1.65	-	-	0.30
		15	1/2"	108	25	-	12.5	-	-	21.7	2.10	-	-	0.30
GEMÜ 671	25	15	1/2"	120	25	-	19.0	-	-	21.7	2.10	-	-	0.62
		20	3/4"	120	25	-	19.0	-	-	27.2	2.10	-	-	0.58
		25	1"	120	25	19.0	19.0	25.4	1.2	34.0	2.80	25.0	1.2	0.55
	40	32	1 1/4"	153	25	-	26.0	31.8	1.2	42.7	2.80	33.7	1.2	1.45
		40	1 1/2"	153	25	26.0	26.0	38.1	1.2	48.6	2.80	38.0	1.2	1.32
	50	50	2"	173	30	32.0	32.0	50.8	1.5	60.5	2.80	51.0	1.2	2.25
		65	2 1/2"	173	30	-	34.0	63.5	2.0	-	-	63.5	1.6	2.20
	80	65	2 1/2"	216	30	-	62.0	63.5	2.0	76.3	3.00	63.5	1.6	8.60
		80	3"	254	30	-	62.0	76.3	2.0	89.1	3.00	76.1	1.6	8.00
	100	100	4"	305	30	-	76.0	101.6	2.0	114.3	3.00	101.6	2.0	24.10

* only for investment cast design ** only for forged design MG = diaphragm size
 For materials see overview on page 12

Butt weld spigots, connection code 55, 59, 63, 65
Valve body material: Investment casting (code C3), forged body (code 40, F4)

Pipe standard								BS 4825 Part 1		ASME BPE / DIN 11866 series C		ANSI/ASME B36.19M Schedule 10s		ANSI/ASME B36.19M Schedule 40s		Weight [kg]
Connection code								55		59		63		65		
Type	MG	DN	NPS	L	c	H1*	H1**	ød	s	ød	s	ød	s	ød	s	
GEMÜ 611	10	10	3/8"	108	25	-	12.5	9.53	1.2	9.53	0.89	17.1	1.65	17.1	2.31	0.30
		15	1/2"	108	25	-	12.5	12.70	1.2	12.70	1.65	21.3	2.11	21.3	2.77	0.30
		20	3/4"	108	25	12.5	12.5	19.05	1.2	19.05	1.65	-	-	-	-	0.30
GEMÜ 671	25	15	1/2"	120	25	-	19.0	-	-	-	-	21.3	2.11	21.3	2.77	0.62
		20	3/4"	120	25	16.0	19.0	19.05	1.2	19.05	1.65	26.7	2.11	26.7	2.87	0.58
		25	1"	120	25	19.0	19.0	-	-	25.40	1.65	33.4	2.77	33.4	3.38	0.55
	40	32	1 1/4"	153	25	-	26.0	-	-	-	-	42.2	2.77	42.2	3.56	1.45
		40	1 1/2"	153	25	26.0	26.0	-	-	38.10	1.65	48.3	2.77	48.3	3.68	1.32
	50	50	2"	173	30	32.0	32.0	-	-	50.80	1.65	60.3	2.77	60.3	3.91	2.25
		65	2 1/2"	173	30	-	34.0	-	-	63.50	1.65	-	-	-	-	2.10
	80	65	2 1/2"	216	30	-	62.0	-	-	63.50	1.65	73.0	3.05	73.0	5.16	8.60
		80	3"	254	30	-	62.0	-	-	76.20	1.65	88.9	3.05	88.9	5.49	8.00
	100	100	4"	305	30	-	76.0	-	-	101.60	2.11	114.3	3.05	114.3	6.02	24.10

* only for investment cast design ** only for forged design MG = diaphragm size
 For materials see overview on page 12



Body dimensions [mm]

Threaded sockets, connection code 1 Valve body material: brass (code 12), investment casting (code 37)

Type	MG	DN	R	Material code 12						Material code 37						Weight [kg]
				H	H1	t	L	SW2	Number of flats	H	H1	t	L	SW2	Number of flats	
GEMÜ 611	10	12	G 3/8	23	11	13	55	22	2	25	13	12	55	22	2	0.17
		15	G 1/2	29	14	15	75	25	2	30	15	15	68	27	2	0.26

MG = diaphragm size For materials see overview on page 13

Threaded sockets, connection code 1 Valve body material: GG25 (code 8), investment casting (code 37)

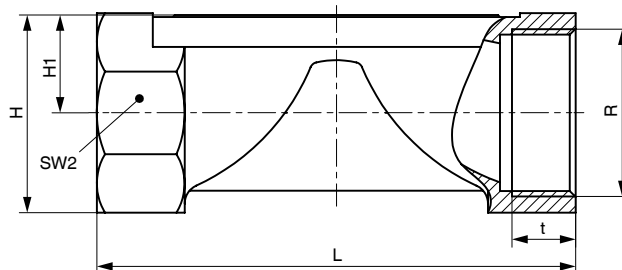
Type	MG	DN	R	Material code 8						Material code 37						Weight [kg]
				H	H1	t	L	SW2	Number of flats	H	H1	t	L	SW2	Number of flats	
GEMÜ 671	25	15	G 1/2	35	19	12	85	32	6	29	16	15	85	27	6	0.32
		20	G 3/4	40	19	13	85	41	6	32	16	16	85	32	6	0.34
		25	G 1	42	19	16	110	46	6	37	16	13	110	41	6	0.39
	40	32	G 1 1/4	56	28	16	120	55	6	49	24	20	120	50	8	0.88
		40	G 1 1/2	61	28	18	140	65	6	52	24	18	140	55	8	0.93
		50	G 2	73	35	18	165	75	6	68	33	26	165	70	8	1.56

MG = diaphragm size For materials see overview on page 13

Threaded sockets, connection code 31 Valve body material: investment casting (code 37)

Type	MG	DN	R	H	H1	t	L	SW2	Number of flats	Weight [kg]
GEMÜ 671	25	15	NPT 1/2	29	16	14	85	27	6	0.32
		20	NPT 3/4	32	16	14	85	32	6	0.34
		25	NPT 1	42	21	17	110	41	6	0.39
	40	32	NPT 1 1/4	49	24	17	120	50	8	0.88
		40	NPT 1 1/2	52	24	17	140	55	8	0.93
		50	NPT 2	68	33	18	165	70	8	1.56

MG = diaphragm size



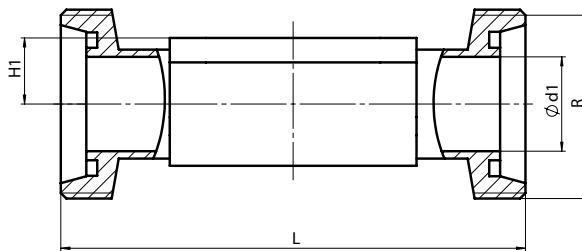
Body dimensions [mm]

Threaded connections, connection code 6, 62 Valve body material: Forged body (code 40)

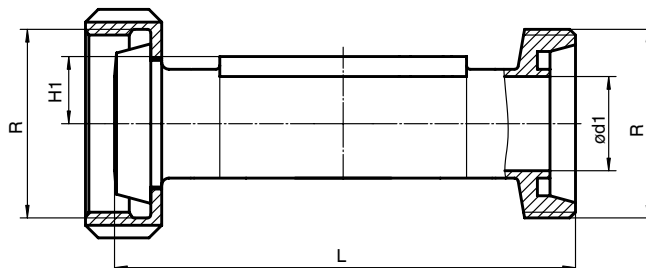
Type	MG	DN	H1	ød1	Thread to DIN 405 R	Code 6 L	Code 62 L	Weight [kg]
GEMÜ 611	10	10	12.5	10,0	RD 28 x 1/8	118	116	0,33
		15	12.5	16,0	RD 34 x 1/8	118	116	0,35
GEMÜ 671	25	15	19.0	16,0	RD 34 x 1/8	118	116	0,71
		20	19.0	20,0	RD 44 x 1/6	118	114	0,78
		25	19.0	26,0	RD 52 x 1/6	128	127	0,79
	40	32	26.0	32,0	RD 58 x 1/6	147	147	1,66
		40	26.0	38,0	RD 65 x 1/6	160	160	1,62
	50	50	32.0	50,0	RD 78 x 1/6	191	191	2,70
	80	65	62.0	66,0	RD 95 x 1/6	246	246	9,22
		80	62.0	81,0	RD 110 x 1/4	256	256	9,20

MG = diaphragm size

Code 6



Code 62



Body dimensions [mm]

Flanges - DIN EN 1092, connection code 8
Valve body material: GGG 40.3 (code 17, 18), investment casting (code C3),
forged body (code 40), investment casting PFA lined (code 39)

Type	MG	DN	øD	øk	øL	Number of bolts	H1			FTF	Weight [kg]
							Material code 17, 18, 39	Material code C3	Material code 40		
GEMÜ 671	25	15	95	65	14	4	18.0	13.0	19.0	130*	1.85
		20	105	75	14	4	20.5	16.0	19.0	150	2.35
		25	115	85	14	4	23.0	19.0	19.0	160	2.85
	40	32	140	100	19	4	28.7	24.0	26.0	180	4.90
		40	150	110	19	4	33.0	26.0	26.0	200	5.65
	50	50	165	125	19	4	39.0	32.0	32.0	230	7.45
	80	65	185	145	19	4	51.0	-	62.0	290	10.20
		80	200	160	19	8	59.5	-	62.0	310	14.20
	100	100	220	180	19	8	73.0	-	76.0	350	21.00

*Material code C3, 40 FTF = 150 (no DIN length)
 For materials see overview on page 13

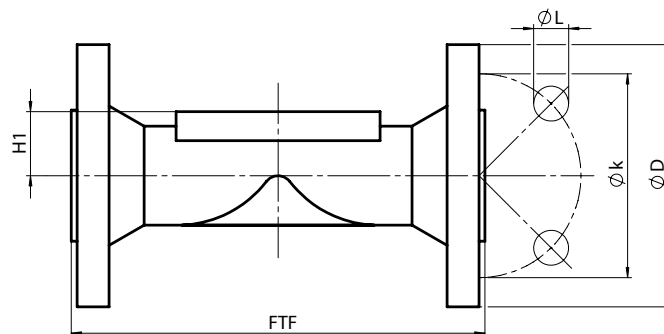
MG = diaphragm size

Flanges - ANSI Class 125/150 RF, connection code 38, 39
Valve body material: GGG 40.3 (code 17, 18), investment casting (code C3),
forged body (code 40), investment casting PFA lined (code 39)

Type	MG	DN	øD	øk	øL	Number of bolts	H1			FTF		Weight [kg]
							Material code 17, 18, 39	Material code C3	Material code 40	Connection code 38	Connection code 39	
GEMÜ 671	25	15	90	60.3	15.9	4	18.0	13.0	19.0	-	130	1.85
		20	100	69.9	15.9	4	20.5	16.0	19.0	146	150	2.35
		25	110	79.4	15.9	4	23.0	19.0	19.0	146	160	2.85
	40	32	115	88.9	15.9	4	28.7	24.0	26.0	-	180	4.90
		40	125	98.4	15.9	4	33.0	26.0	26.0	175	200	5.65
	50	50	150	120.7	19.0	4	39.0	32.0	32.0	200	230	7.45
	80	65	180	139.7	19.0	4	51.0	-	62.0	226	290	10.20
		80	190	152.4	19.0	4	59.5	-	62.0	260	310	14.20
	100	100	230	190.5	19.0	8	73.0	-	76.0	327	350	21.00

MG = diaphragm size

For materials see overview on page 13

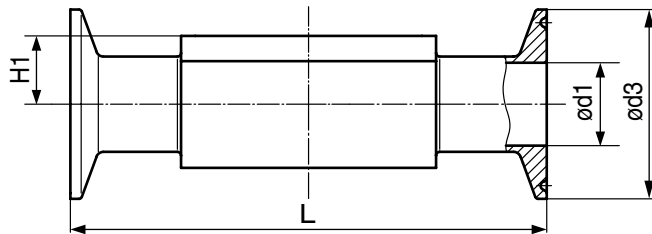


Body dimensions [mm]

Clamp connections, connection code 80, 82, 88, 8A, 8E
Valve body material: Forged body (code 40, F4)

Pipe connection for clamp		ASME BPE									ISO 1127 / EN 10357 series C / DIN 11866 series B			EN 10357 series A (formerly DIN 11850 series 2) / DIN 11866 series A			SMS 3008			Weight [kg]
Clamp connection		ASME BPE									DIN 32676 series B			DIN 32676 series A			ISO 2852 / SMS 3017			
Anschluss-Code Clamp		80			88			82			8A			8E						
Type	MG	DN	NPS	H1	ød1	ød3	L	ød1	ød3	L	ød1	ød3	L	ød1	ød3	L	ød1	ød3	L	
GEMÜ 611	10	10	3/8"	12.5	-	-	-	-	-	-	14.0	25.0	108.0	10	34.0	108.0	-	-	-	0.30
		15	1/2"	12.5	9.40	25.0	88.9	9.40	25.0	108	18.1	50.5	108.0	16	34.0	108.0	-	-	-	0.43
		20	3/4"	12.5	15.75	25.0	101.6	15.75	25.0	117	-	-	-	-	-	-	-	-	-	-
GEMÜ 671	25	15	1/2"	19.0	-	-	-	-	-	-	18.1	50.5	108.0	16	34.0	108.0	-	-	-	0.75
		20	3/4"	19.0	15.75	25.0	101.6	15.75	25.0	117	23.7	50.5	117.0	20	34.0	117.0	-	-	-	0.71
		25	1"	19.0	22.10	50.5	114.3	22.10	50.5	127	29.7	50.5	127.0	26	50.5	127.0	22.6	50.5	127	0.63
	40	32	1 1/4"	26.0	-	-	-	-	-	-	38.4	64.0	146.0	32	50.5	146.0	31.3	50.5	146	1.62
		40	1 1/2"	26.0	34.80	50.5	139.7	34.80	50.5	159	44.3	64.0	159.0	38	50.5	159.0	35.6	50.5	159	1.50
	50	50	2"	32.0	47.50	64.0	158.8	47.50	64.0	190	56.3	77.5	190.0	50	64.0	190.0	48.6	64.0	190	2.50
		65	2 1/2"	34.0	60.20	77.5	193.8	60.20	77.5	216	-	-	-	-	-	-	60.3	77.5	216	2.30
	80	65	2 1/2"	62.0	60.20	77.5	193.8	60.20	77.5	216	72.1	91.0	216.0	66	91.0	216.0	60.3	77.5	216	8.90
		80	3"	62.0	72.90	91.0	222.3	72.90	91.0	254	84.3	106.0	254.0	81	106.0	254.0	72.9	91.0	254	8.50
	100	100	4"	76.0	97.38	119.0	292.1	97.38	119.0	305	109.7	130.0	305.0	100	119.0	305.0	97.6	119.0	305	24.80

MG = diaphragm size



Overview of valve bodies for GEMÜ 611, 671

Spigots

	Connection code		0	16	17		18	35	36	37		55	59		60		63	65		
	Material code		40	40	C3	40	40	40	40	C3	40	40	C3	40	C3	40	40	40	40	
Type	MG	DN																		
GEMÜ 611	10	10	-	X	X	X	X	-	X	-	-	X	-	X	X	X	X	X	X	
		15	X	X	X	X	X	-	X	-	-	X	-	X	X	X	X	X	X	
		20	-	-	-	-	-	-	-	-	-	-	X	X	X	-	-	-	-	
GEMÜ 671	25	15	X	X	X	X	X	-	X	-	-	-	-	-	X	X	X	X	X	
		20	X	X	X	X	X	-	X	-	-	X	X	X	X	X	X	X	X	
		25	X	X	X	X	X	X	X	X	X	X	-	X	X	X	X	X	X	
	40	32	X	X	X	X	X	X	X	X	-	X	-	-	-	X	X	X	X	X
		40	X	X	X	X	X	X	X	X	X	X	-	X	X	X	X	X	X	X
	50	50	X	X	X	X	X	X	X	X	X	X	-	X	X	X	X	X	X	X
		65	-	-	-	-	-	-	X	-	-	X	-	-	X	-	-	-	-	
	80	65	-	-	-	X	-	X	X	-	X	-	-	X	-	X	X	X	X	X
		80	-	-	-	X	-	X	X	-	X	-	-	X	-	X	X	X	X	X
	100	100	-	-	-	X*	-	X*	X*	-	X*	-	-	X*	-	X*	X*	X*	X*	

*Valve bodies are not suitable for use with diaphragms code 5E

Availability of material code 42, F4: same as code 40

MG = diaphragm size

Overview of valve bodies for GEMÜ 611, 671

		Threaded connections					Clamps					Flanges														
Type	Connection code	1			31	6	62	80	82	88	8A	8E	8					38			39					
	Material code	8	12	37	37	40	40	40	40	40	40	40	17	18	C3	39	40	17	18	39	17	18	C3	39	40	
	MG	DN																								
GEMÜ 611	10	10	-	-	-	-	W	W	-	K	-	K	-	-	-	-	-	-	-	-	-	-	-	-	-	-
		12	-	X	X	-	-	-	-	-	-	-	-	-	-	-	-	-	-	-	-	-	-	-	-	-
		15	-	X	X	-	W	W	K	W	K	K	-	-	-	-	-	-	-	-	-	-	-	-	-	-
		20	-	-	-	-	-	-	K	-	K	-	-	-	-	-	-	-	-	-	-	-	-	-	-	-
GEMÜ 671	25	15	X	-	X	X	W	W	-	W	-	K	-	X	X	W	X	W	-	-	-	X	X	W	X	W
		20	X	-	X	X	W	W	K	K	K	K	-	X	X	W	X	W	X	X**	X	X	X	W	X	W
		25	X	-	X	X	W	W	K	K	K	K	K	X	X	W	X	W	X	X**	X	X	X	W	X	W
	40	32	X	-	X	X	W	W	-	W	-	K	K	X	X	W	X	W	-	-	-	X	X	W	X	W
		40	X	-	X	X	W	W	K	W	K	K	K	X	X	W	X	W	X	X**	X	X	X	W	X	W
	50	50	X	-	X	X	W	W	K	W	K	K	K	X	X	W	X	W	X	X**	X	X	X	W	X	W
		65	-	-	-	-	-	-	W	-	W	-	W	-	-	-	-	-	-	-	-	-	-	-	-	-
	80	65	-	-	-	-	W	W	K	K	K	K	K	-	-	-	-	W	-	-	-	-	-	-	-	W
		80	-	-	-	-	W	W	K	W	K	W	K	X	X	-	X	W	X	X**	X	X	X	-	X	W
	100	100	-	-	-	-	-	-	W*	W*	W	W*	W*	X	X	-	X	W*	X	X**	X	X	X	-	X	W*

* Valve bodies are not suitable for use with diaphragms code 5E

** Connection code 38 / material code 18 on request

X = Standard

K = Connections completely machined (not welded)

W = Welded construction

Availability of material code 42, F4: same as code 40

MG = diaphragm size

For further metal diaphragm valves, accessories and other products,
please see our Product Range catalogue and Price List. Contact GEMÜ.

GEMÜ® VALVES, MEASUREMENT
AND CONTROL SYSTEMS

